

# Lucernario aerante<sup>®</sup> INOX

For lightwells



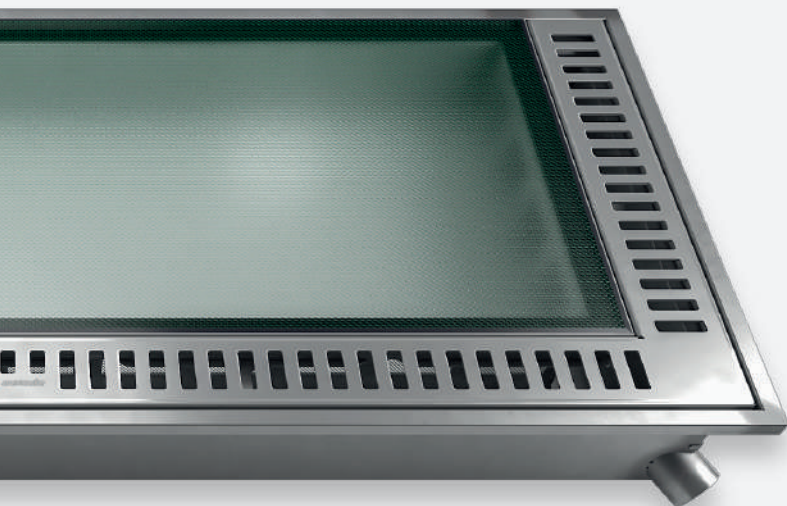
Certified safety

**RC2**  
class

Certified glass

**1322 lb**  
bearing capacity





## Reinventing the traditional lightwells

*Lucernario aerante INOX* can be installed during the construction or renovation of terraces and sidewalks with lightwells. Also ideal for applications in the garden, on **precast lightwells made of concrete or plastic**. Stainless-steel structure, with high structural bearing capacity, for easily adapting to a variety of situations. The front drainpipes allow rainwater to be channelled into dedicated drainage pipes on the ground floor for **sheltered, clean and dry basement windows**.

### Why choose a Lucernario aerante INOX



#### Natural Light

The laminated glass has a slight satin finish which permits better light diffusion in the basement. The non-slip pattern helps protect the surface of the glass from scratches.



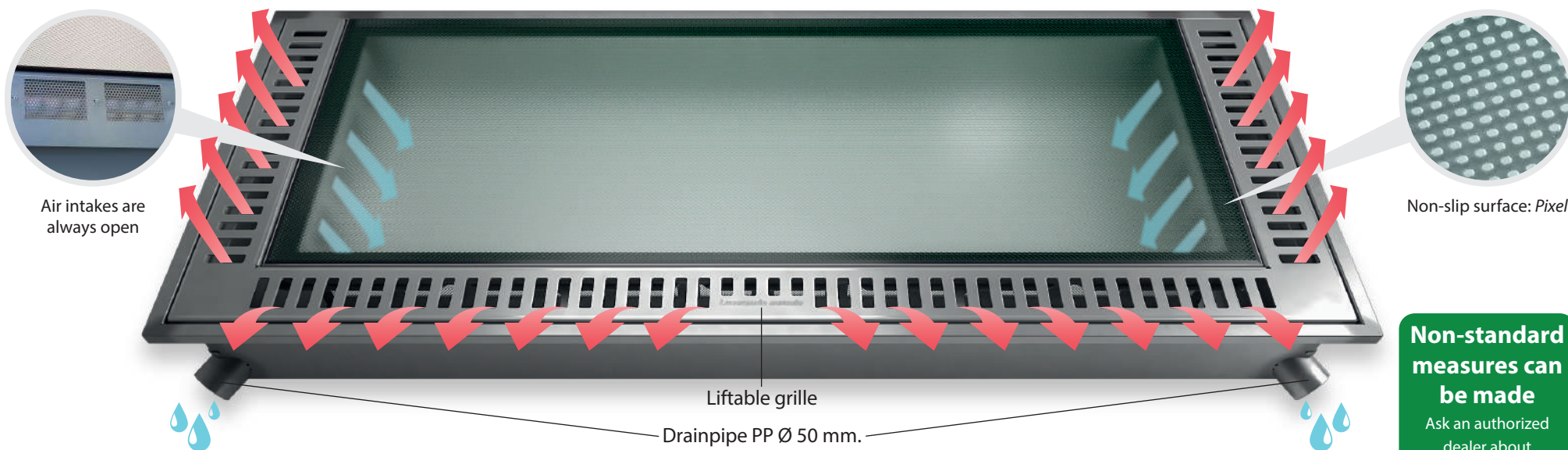
#### Unmatched cleaning

Dirt is collected inside an inspection channel for easy cleaning from the outside. Micro-perforated meshes prevent the passage of insects and debris.



#### Security

The technology applied to the product makes it safer than a traditional grille, reducing the risk of break-in through the basement. Security product certified RC2.



**Non-standard measures can be made**  
Ask an authorized dealer about times and costs.

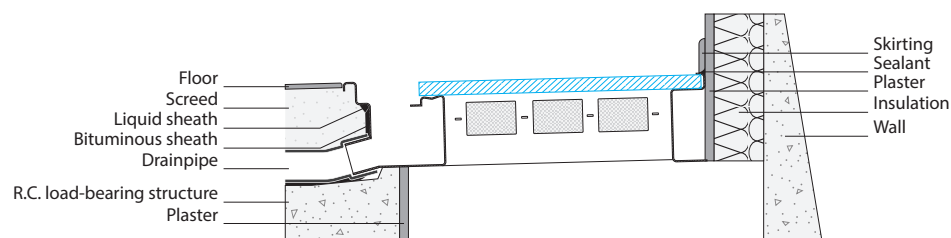
## How it works

*Lucernario aerante INOX* collects rainwater from its drainage channel and permits ventilating the underground environment through the air intakes. The air intakes, which are **always open**, are protected by **anti-insect and dirt** meshes. Simply lift the grille to clean the drainage channel.

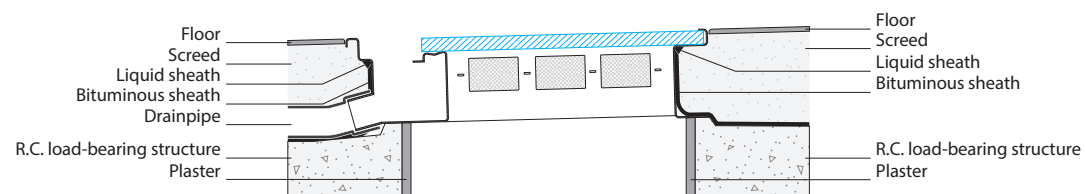
## The finishes

*Lucernario aerante INOX* is made of semi-gloss steel for a modern but not too flashy appearance. The shatterproof glass plays a major role in terms of **security**, it provides natural light and allows safe transit thanks to the **non-slip pattern R11**.

Installation pattern up against a wall

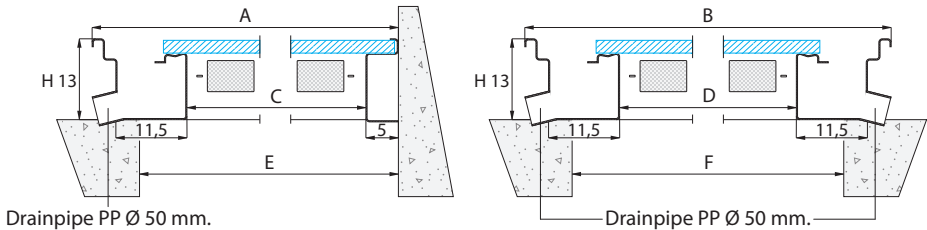
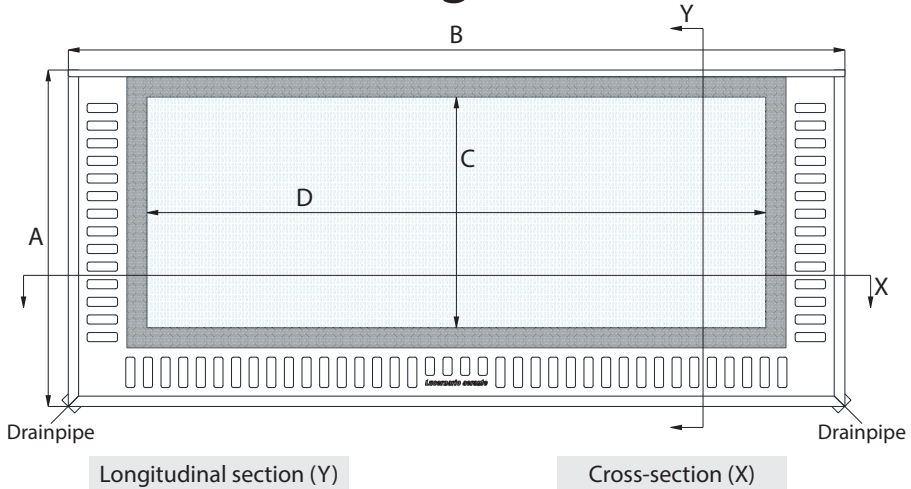


Installation on a terrace (away from the wall)



These installation diagrams are provided as examples. We recommend you consult a professional who can define the ideal realisation of your floor.

# Size guide



## Available dimensions

Model	Product dimensions		Luminous compartment			"From-to" base hole		Weight
	A	B	C	D	CxD(m²)	E	F	Kg
XS55	55	130	34,6	99,6	0,35	35-47	100-114	44
<b>NEW</b> XS85	85	130	64,6	99,6	0,64	65-77	100-114	63
S65	65	150	44,6	119,6	0,53	45-57	120-134	57
S85	85	150	64,6	119,6	0,77	65-77	120-134	73
M65	65	170	44,6	139,6	0,62	45-57	140-154	64
L65	65	190	44,6	159,6	0,71	45-57	160-174	71

Where not specified, measurements are in centimetres.

See the Technical Data Sheet on the website [inox.lucernarioaerante.it](http://inox.lucernarioaerante.it) before purchasing the product.

**Lucernario aerante<sup>®</sup> INOX**  
For lightwells

WARRANTY PROGRAM



\*Prove your purchase by registering your product on [inox.lucernarioaerante.it](http://inox.lucernarioaerante.it) and obtain the Gold Warranty lasting 14 years.

Authorized dealer



**No more same old grilles**  
[inox.lucernarioaerante.it](http://inox.lucernarioaerante.it)